

**MURDOCH
ENGINEERING**
SIGN STRUCTURE PROFESSIONALS

2399 A-2 NJ-34
MANASQUAN, NJ 08736
(973) 570-8215 MO
Jere Murdoch
Jere Murdoch, PE
Professional Engineer
NJ PE Lic. #73432
Exp. 2/28/2025

5/11/2023

PN 2242570

Project Title
PROLOGIS

Date 08.13.20

AGI EoR	N. CARRELL
Lead Drafter	NJC
Drawn By	POR
Project Mgr.	D. BLANTON

General Sign Specifications

☐ Interior ☒ Exterior

☐ Single Faced ☒ Double Faced

☐ _____

☒ Non-Illuminated

☐ Illuminated

_____ Volts _____ Amps(+/-)

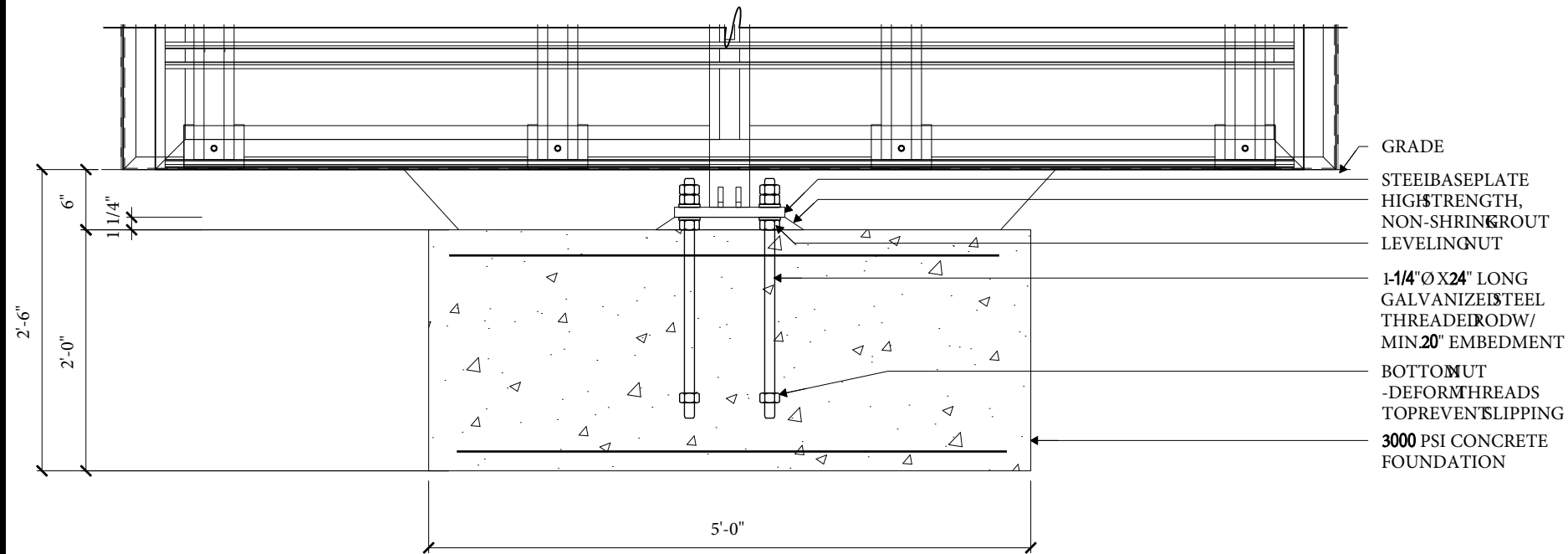
Location _____

Windspeed _____

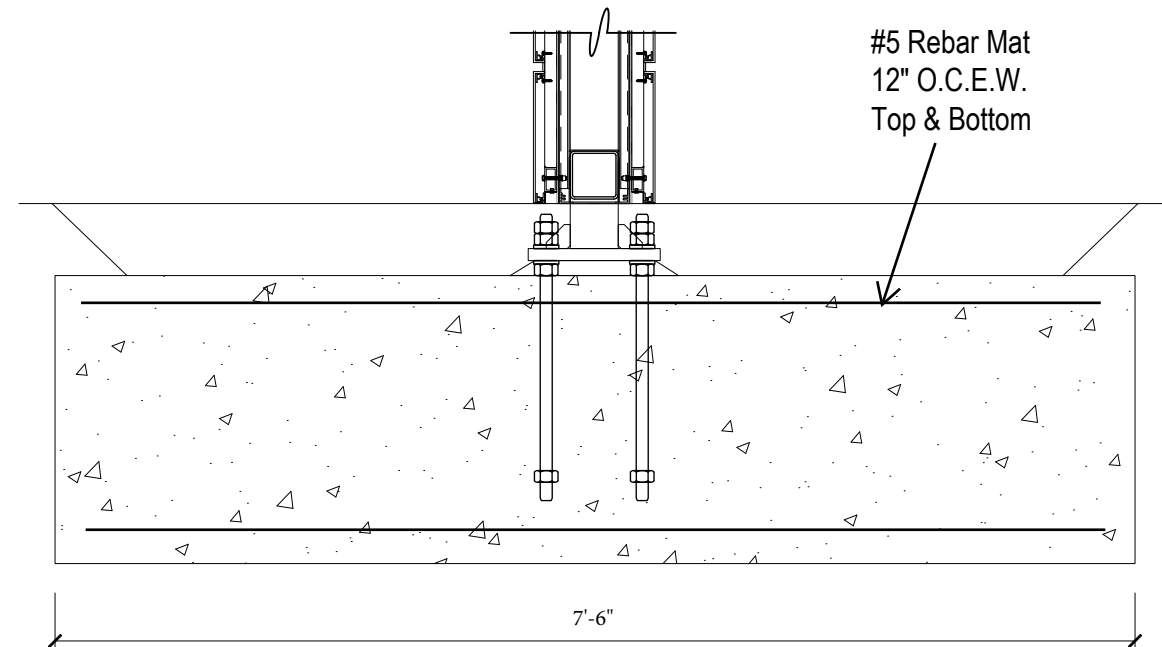
Drawing Revisions			
Drawn By	Date	Change	
A BP	10.26.22	56737 - STEEL AND FOUNDATION NOTE UPDATES	
A			
A			
A			
A			
B			
A			
A			
B			
A			

This document is the sole property of AGI, and all design, manufacturing, reproduction, use and sale rights regarding the same are strictly forbidden. It is submitted under a confidential relationship, for a special purpose and the recipient by accepting this document will not be copied or reproduced in whole or in part, nor its contents revealed in any manner or to any person except for the purpose for which it was tendered, nor any special features peculiar to this design be incorporated in other projects.

Code	40498	Type	A
Sign Type	GHM-75-VHWL	PG. #:	11



1 SPREAD FOUNDATION
11 3/4"=1' - 0"



2 SIDE VIEW
11 $3/4" = 1' - 0"$

NOTES:
REFER TO MATERIAL SPECIFICATIONS ON PAGE 1

AAC
PZ25- 30000001
03/03/2026